

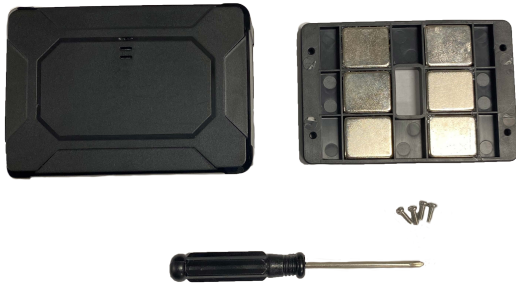
# INSTALLATION GUIDE



G-007

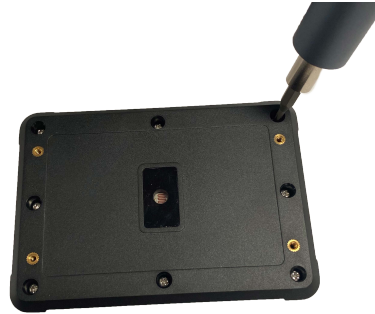
## 1. G-007 What is included

GPS unit, magnet backplate, screws and screwdriver



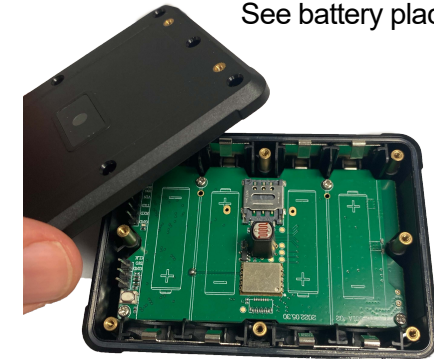
## 2. Remove the GPS unit back plate

Remove the 6 screws



## 3. Remove plate

See battery placement

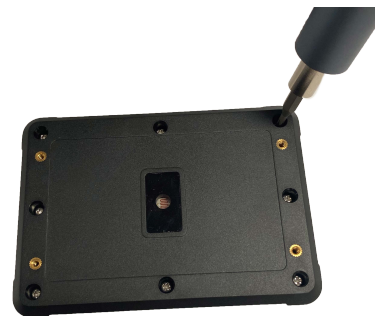


## 4. Insert the batteries

Insert 4 x AA Alkaline batteries



## 5. Screw Unit back plate



## 6. option add magnet backplate

Place the magnet place, magnet facing inward and screw in place



[laxsoncanada.ca](http://laxsoncanada.ca)

[support@laxson.com](mailto:support@laxson.com)